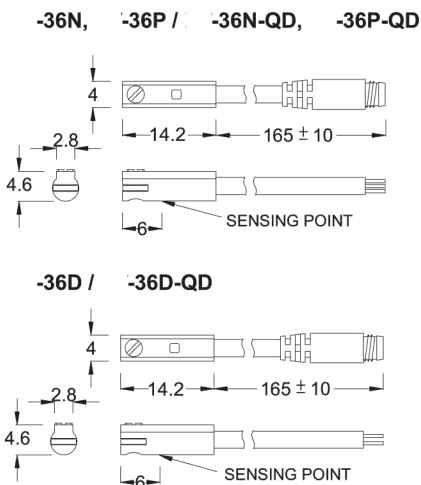
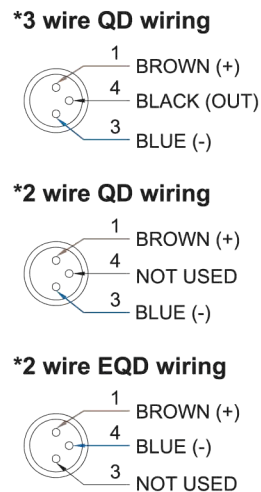




■ DIMENSION



■ QD PINOUT



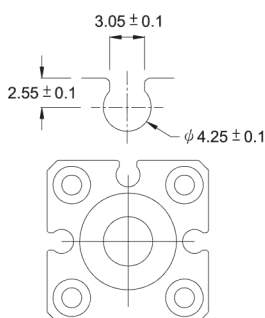
■ SPECIFICATION

| TYPE | BTC-36D | BTC-36N | BTC-36P |
|------------------------------------|-----------------------------------|---------------------|----------------------|
| CONNECT DIAGRAM | | | |
| CHARACTERISTICS | | | |
| WIRING METHOD | 2-Wire Type | 3-Wire Type | |
| SWITCHING LOGIC | Solid State Output, Normally Open | | |
| SENSOR TYPE | -- | NPN Current Sinking | PNP Current Sourcing |
| OPERATING VOLTAGE | 10~28V DC | 4.5~28V DC | |
| SWITCHING CURRENT | 4~20 mA max. | 50 mA max. | |
| CONTACT RATING (NOTE 1) | 0.6 W max. | 1.5 W max. | |
| CURRENT CONSUMPTION | -- | 10 mA @ 24V DC max. | |
| VOLTAGE DROP | 3.5 V max. | 0.5V @ 50mA max. | |
| LEAKAGE CURRENT | 0.8 mA max. | 0.01 mA max. | |
| INDICATOR | Red LED | | |
| CABLE | ø2.6, 2C, PVC | ø2.6, 3C, PVC | |
| OPERATING FREQUENCY | 1000 Hz | | |
| MAGNET REQUIREMENT (NOTE 2) | 40 Gauss | | |
| TEMPERATURE RANGE | -10~70°C | | |
| SHOCK (NOTE 3) | 50 G | | |
| VIBRATION (NOTE 4) | 9 G | | |
| ENCLOSURE CLASSIFICATION | IEC 529 IP 67 | | |
| PROTECTION CIRCUIT (NOTE 5) | 4 | 3,4 | |

NOTE:

1. WARNING: Never exceed rating (Watt=Voltage x Amperage). Permanent damage to sensor will occur.
2. Measuring standard target: ø15.5Xø8X5t (Anisotropy rubber magnet)
3. Sin wave / X, Y, Z 3 directions / 3 times each direction / 11 ms each time.
4. Double amplitude 1.5 mm / 10Hz~55Hz~10Hz (Sweep 1 min) / X, Y, Z 3 directions / 1 hour each time.
5. 1=None / 2=Short-circuit / 3=Power Source Reverse polarity / 4=Surge Suppression

■ GROOVE DIMENSION



Unit:mm