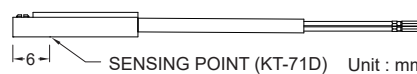
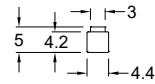
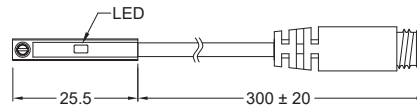


BTC-71 SERIES

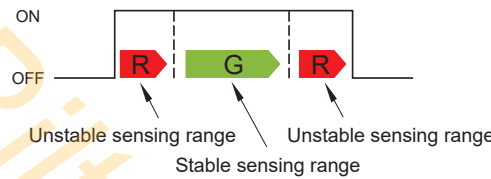


Dimensions

BTC-71D, BTC-71N, BTC-71P /
BTC-71D-QD, BTC-71N-QD,
BTC-71P-QD



SW Out



- Dual Color LED allow more precise positioning

Specifications

MODEL	BTC-71D	BTC-71N	BTC-71P
Connect Diagram			
Characteristics			
Wiring Method	2-Wire Type	3-Wire Type	
Switching Logic	Solid State Output, Normally Open		
Sensor Type	-	NPN Current Sinking	PNP Current Sourcing
Operating Voltage	10 ~ 28 V DC		
Switching Current	80 mA max.		
Contact Rating *1	2 W max.		
Current Consumption	-	10 mA @ 24 V DC max.	
Voltage Drop	4 V max.	1.5 V max.	
Leakage Current	1 mA max.	0.05 mA max.	
Indicator	Red LED : unstable sensing range ; Green LED : stable sensing range		
Cable	ø2.8, 2C, PUR	ø2.8, 3C, PUR	
Operating Frequency	1000 Hz		
Magnet Requirement *2	85 Gauss		
Temperature Range	-10 ~ 60 °C		
Shock *3	50 G		
Vibration *4	9 G		
Enclosure Classification	IEC 60529 IP67		
Protection Circuit *5	2, 3, 4		

NOTE:

*1 : WARNING : Never exceed rating (Watt = Voltage x Amperage).
Permanent damage to sensor will occur.

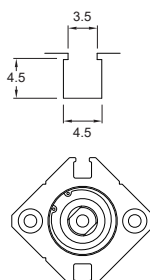
*2 : Measuring standard target : ø15.5 × ø8 × 5t (Anisotropy rubber magnet)

*3 : Sin wave / X , Y , Z 3 directions / 3 times each direction / 11 ms each time.

*4 : Double amplitude 1.5 mm / 10 Hz ~ 55 Hz ~ 10 Hz (Sweep 1 min) / X , Y , Z 3 directions / 1 hour each time.

*5 : 1 = None / 2 = Short-circuit / 3 = Power Source Reverse polarity / 4 = Surge Suppression

Groove Dimensions



Unit : mm